

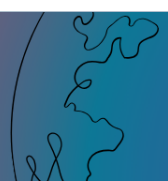


6 PORT GIGA - UPOE INDUSTRIAL L2 MANAGED SWITCH

DDSPMG SERIES



DATA BRIDGE
DYNAMIC



SYNOPSIS

- THE DDPSMG 304 2S 360 HI IS A HIGH PERFORMANCE L2+ MANAGED ETHERNET SWITCH WITH 4 X 10/100/1000TX RJ45 COPPER PORTS WITH 4 X 802.3BT POE AND 2 X 1000M SFP PORTS, WHICH MEETS THE HIGH RELIABILITY REQUIREMENTS DEMANDED BY INDUSTRIAL ROLLING STOCK APPLICATIONS
- IT PROVIDES L2 WIRE SPEED AND ADVANCED SECURITY FUNCTION FOR NETWORK AGGREGATION DEPLOYMENT. IT DELIVERS ENHANCED RING RECOVERY LESS THAN 20MS IN SINGLE RING. FOR MORE USAGE FLEXIBILITIES, DDPSMG 304-2S 360 HI SUPPORTS WIDE OPERATING TEMPERATURE FROM -40 TO 75°C
- SUPPORT ZERO-TOUCH PROVISIONING (ONLY FOR IPV6), IT ALLOWS REMOTELY DEPLOYMENT AND CONFIGURATION OF MULTI-SITE NETWORKS, SO THERE'S NO NEED TO SEND OUT AN ENGINEER FOR ON-SITE CONFIGURATION, TO ENSURES EFFICIENT DEPLOYMENT WITH LOWER COSTS

FEATURES & BENEFITS

- CONFORMS TO IEEE802.3, 802.3U, 802.3AB, 802.3Z, 802.3AF, 802.3AT, 802.3BT-TYPE4
- PROVIDE 8 X 10/100/1000TX RJ45 COPPER PORTS AND 2 X 1000M SFP PORTS
- PROVIDE 4 X 802.3BT POE
- POE BUDGET 360W
- HIGH BACK-PLANE BANDWIDTH 12GBPS
- SUPPORT ICMPV6
- SUPPORT IPV6 NEIGHBOR DISCOVERY
- SUPPORT IPV6 TELNET
- SUPPORT MLD SNOOPING
- SUPPORT STANDARD IP/ EXTEND IP / MAC IP / ARP ACL
- SUPPORT IGMP SNOOPING FOR MULTI-MEDIA APPLICATION
- SUPPORT PORT MIRROR AND BANDWIDTH CONTROL
- SUPPORT IEEE802.3X FLOW CONTROL
- SUPPORT PORT BASED VLAN / 802.1Q TAG VLAN
- SUPPORT IEEE802.3AD PORT TRUNK WITH LACP
- SUPPORT SPANNING TREE PROTOCOL IEEE802.1D/802.1W/802.1S
- SUPPORT IEEE 802.1P CLASS OF SERVICE
- SUPPORT IEEE 802.1X USER AUTHENTICATION
- SUPPORT BROADCAST STORM FILTER
- SUPPORT SYSTEM EVENT LOG
- SUPPORT COMMAND LINE INTERFACE MANAGEMENT
- SUPPORT ZERO-TOUCH PROVISIONING (ONLY FOR IPV6)
- MANAGEMENT BY WEB / SNMP / SSH / TELNET (IPV6 READY) / CONSOLE
- SURGE PROTECTION FOR POWER PORT AND DATA PORTS
- WIDE POWER INPUT: 44 TO 57VDC
- WIDE WORKING TEMPERATURE: -40 TO 75°C
- IP30 ALUMINUM CASE
- 200,000 HOURS MTBF (PARTS COUNT RELIABILITY PREDICTION)

TECHNICAL SPECIFICATIONS

ATTRIBUTES

| | |
|------------------------------|---|
| Networking Interfaces | 4 10/100/1000M RJ45 Copper ports. 2 1000M SFP ports. |
| Management Interface | RJ45 Console port |
| LED Indicators | Power, Link/Act, PoE |

COPPER CABLE

| | |
|-------------------|---|
| 10Base-T | 2-pair UTP/STP Cat. 3,4,5/5E,6 cable EIA/TIA-568 100-ohm (100m) |
| 100Base-T | 2-pair UTP/STP Cat. 5/5E,6 cable EIA/TIA-568 100-ohm (100m) |
| 1000Base-T | 4-pair UTP/STP Cat. 5E,6 cable EIA/TIA-568 100-ohm (100m) |

PERFORMANCE

| | |
|------------------------------|-------------------|
| Switching Capacity | 12 Gbps |
| Forwarding Capacity | 8.93 Mpps |
| Forwarding Mode | Store and Forward |
| Packet Buffer Memory | 4.1 Mbit |
| RAM for CPU | 1 Gbit |
| Flash Memory | 128 Mbit |
| MAC Address Table | 8K |
| Max. Jumbo Frame size | 16K |
| VLAN Quantity | 4K |
| ACL Table | 512 |
| L3 Interface | 32 |
| Port Queues | 8 |
| PoE Budget | 360W |

PHYSICAL

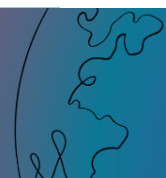
| | |
|-------------------------------|---|
| Dimensions | 147.5x143x60mm |
| Weight | 3KG |
| Operating Temperature | -40 to 75°C |
| Storage Temperature | -40 to 75°C |
| Operating Humidity | 5 to 95% Noncondensing |
| Power Method | 44 to 57VDC |
| Max. Power Consumption | Including PoE Output: 375W Excluding PoE Output: 15W |

POWER OVER ETHERNET

| | |
|----------------------------------|--|
| PoE Interfaces | Ports 1-4 |
| PoE Standard | IEEE802.3af, IEEE802.3at, IEEE802.3bt-type4 |
| Max. PoE Wattage per Port | 90W |
| PoE Voltage | 52VDC (Depend on Power Adapter) |
| PoE Pin Assignment | V- (RJ45 Pin1,2,7,8), V+ (RJ45 Pin 3,4,5,6) for 802.3bt PoE |
| PoE Management | Port-base PoE status view and control, PoE Schedule, PD Alive Auto Check |

PORT CONFIGURATION

| | |
|-----------------------------|--|
| Enable and Disable | Support control enable and disable |
| Auto-Negotiation | Support force port mode and speed |
| Flow Control | Support IEEE802.3x full-duplex Support half-duplex backpressure |
| Storm Control | Support broadcast, multicast and DLF package rate limit |
| Port Mirroring | Support many to one mirroring |
| Rate Limit | Support Port input and output rate limit |
| Link Aggregation | Support manual Link Aggregation Support LACP Up to 8 maximum aggregation groups, each containing up to 8 ports |
| Aggregation Strategy | Source MAC / Destination MAC / Source Destination MAC Source IP / Destination IP / Source Destination IP |
| Port Protection | Each port can be configured into isolated protected port from each other |



MAC CONFIGURATION

| | |
|-------------------------------------|---|
| MAC Address Table Management | Support |
| Transfer Mode | Support IVL transfer mode |
| Static MAC Address | Support |
| MAC Binding | Support |
| MAC Address Filter | Support |
| MAC Quantity Limitation | Support limit the number of MAC-addresses Learning per port |

VLAN CONFIGURATION

| | |
|-----------------------------|---------------------|
| VLAN Based on 802.1Q | Support |
| MAC-Based VLAN | Support |
| IP-Based VLAN | Support |
| Protocol-Based VLAN | Support |
| Voice VLAN | Support |
| Guest VLAN | Support |
| Private VLAN | Support |
| VLAN Mapping | Support 1:1 mapping |
| Double VLAN Markup | Support basic QinQ |

RELIABILITY PROTOCOL

| | |
|----------------------------|--|
| Spanning Tree | Support STP/RSTP/MSTP |
| BPDU Guard | Support |
| BPDU Filter | Support |
| Port Loop Detection | Support |
| EAPS Protocol | Support RFC3619 |
| ERPS Protocol | Support G.8032/Y.1344 |
| LLDP Protocol | Support LLDP and LLDP-MED |
| UDLD Protocol | Totally compatible with UDLD protocol of CISCO |

RELIABILITY PROTOCOL

| | |
|----------------------------|--|
| Spanning Tree | Support STP/RSTP/MSTP |
| BPDU Guard | Support |
| BPDU Filter | Support |
| Port Loop Detection | Support |
| EAPS Protocol | Support RFC3619 |
| ERPS Protocol | Support G.8032/Y.1344 |
| LLDP Protocol | Support LLDP and LLDP-MED |
| UDLD Protocol | Totally compatible with UDLD protocol of CISCO |

HOST ROUTING

| | |
|-----------------------|---------|
| Static ARP | Support |
| Static Routing | Support |

MULTICAST

| | |
|-------------------------------------|---------|
| Static Multicast MAC Address | Support |
| IGMP SNOOPING | Support |
| MVR | Support |
| GMRP | Support |

ACCESS CONTROL LIST (ACL)

| | |
|-----------------------------|---------|
| Based on Standard IP | Support |
| Based on Extend IP | Support |
| Based on MAC IP | Support |
| Based on MAC ARP | Support |
| Based on time | Support |
| Port Filtering | Support |



QUALITY OF SERVICE (QOS)

| | |
|---------------------------------------|--|
| Scheduling Mode | Support WRR, SP, WFQ |
| Sorting Based on Port | Support |
| Sorting Based on 802.1p | Support |
| Sorting Based on DSCP | Support |
| Sorting Based on ACL Data Flow | Support |
| QoS Strategy | Support packet mapped to the corresponding output queue Support to modify the packet's COS and DSCP sign Support limit of data flow Support statistics of data flow Support mirroring of data flow |

SECURITY

| | |
|--------------------------------|--|
| Administrative Security | Support start and end TELNET, WEB and SNMP serve Support TELNET, WEB and SNMP serve binding with Standard IP ACL Support control the number of user for TELNET |
| CPU Protect | Switch self-security protect, forbid flow attack |
| IP-MAC Address Binding | Support binding between static configuration IP, MAC and Port |
| AAA | Support 802.1x protocol Support RADIUS protocol Support RADIUS server authentication authorization and bill Support MAC-based 802.1X authentication. Support 802.1x guest VLAN |
| DHCP SNOOPING | Support dynamic ARP binding to prevent ARP spoofing Support dynamic IP, MAC port binding Support stationary port connect to DHCP server, to prevent privately connect to DHCP sever |
| Prevent ARP Spoofing | Support manual configure ACL rule based on MAC ARP prevent ARP spoofing Support DHCP SNOOPING function, switch dynamically binding ARP and port, when the DHCP get IP address , to prevent ARP spoofing |



IPV6

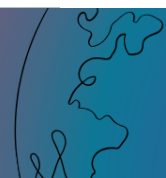
| | |
|--------------------------------|---------|
| ICMPv6 | Support |
| IPv6 Neighbor Discovery | Support |
| MLD Snooping | Support |
| IPv6 Telnet | Support |

MANAGEMENT FEATURES

| | |
|--|---|
| CLI Management | Support serial port management Support TELNET management Support SSH management |
| WEB Management | Support |
| SNMP Management | Support SNMP protocol Support SNMP TRAP Support standard and private MIB |
| User management | Support multi-user management |
| Show CPU Utilization | Support |
| Show RAM Utilization | Support |
| TACACS+ | Support TACACS+ server remote user name and password authentication Support PAP and CHAP password encryption Support TACACS+ server command authorization |
| Log Management | Support |
| RMON | Support RMON 1,2,3,9 group |
| Cluster Management | Support neighbor discovery protocol Support topology discovery protocol Support manual and automated join cluster group Support cluster unification management |
| OAM | Support 802.3ah Support 802.1ag |
| Configuration Download / Upload | Support |
| ZTP | Support Zero-Touch Provisioning (only for IPv6) |

DEBUGGING TOOLS

| | |
|----------------------|---------|
| PING | Support |
| TRACEROUTE | Support |
| TELNET Client | Support |



ORDERING CODE

DDPSMG 304 2S 360 HI

| | |
|---------------|---|
| DDPSMG | PoE L2 Managed Industrial Ethernet Switch |
| 304 | 4 * bt PoE Giga Copper Ports |
| 2S | 2 * Giga Fiber SFP Slots |
| 360 | 360W Ethernet Switch 90W per port |
| Hi | Fixed |



DATA BRIDGE
D Y N A M I C

